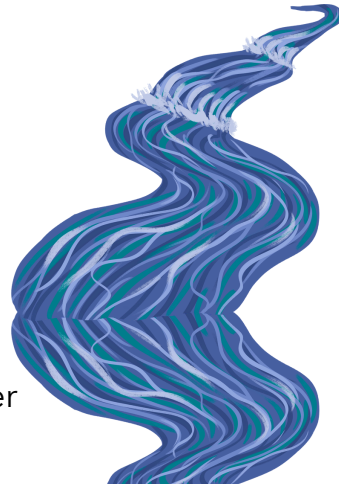


## WATER RESOURCES: QUICK FACTS

### MAJOR WATERSHEDS

- Newell Brook-Androscoggin River
- Chandler Brook
- East Branch Chandler Brook
- Androscoggin River-Merrymeeting Bay



### MAJOR STREAMS

- Libby Brook } Flow to the Royal River
- Alder Brook } Flow to the Royal River
- Gerrish Brook } Flow to the Androscoggin River
- Newell Brook } Flow to the Androscoggin River
- Meadow Brook } Flow to the Androscoggin River
- Pinkham Brook } Flow to the Androscoggin River



**Largest Lake** →  
Runaround Pond

**7% LAKES AND STREAMS CONSERVED**

**3,500+ ACRES OF WETLANDS**



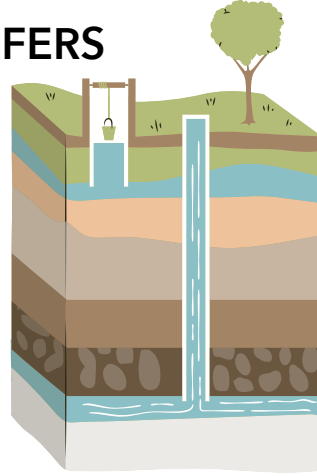
**5% WETLANDS CONSERVED**

**1,550+ ACRES OF AQUIFERS**



Aquifers, underground water supplies, serve as the primary water supply for Durham residents

**6% AQUIFERS CONSERVED**



### WATER QUALITY

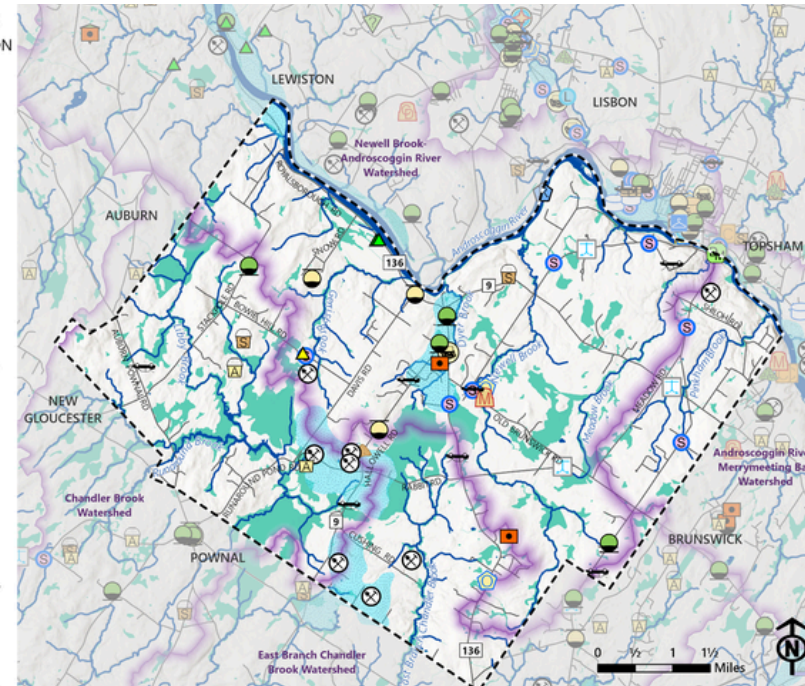
- Not extensively studied
- Impairment from low dissolved oxygen in Chandler Brook
- Impairments on the Androscoggin River from historic industrial use

### POTENTIAL CONTAMINATION SOURCES

#### WATER RESOURCES POTENTIAL CONTAMINATION DURHAM, ME

*This map is for planning and informational purposes only.*

- ▬ Town Boundary
- ▬ Roads
- ▬ Streams
- ▬ Waterbodies
- ▬ Wetlands
- ▬ Watershed Boundaries
- ▬ Aquifers
- Environmental and Geographic Analysis Database (EGAD) Sites**
- ▲ AGRICULTURAL CHEMICAL USE
- ▲ AGRICULTURE NITRATE/BACTERIA
- ▲ ASH UTILIZATION SITE
- ▲ AUTOMOBILE JUNKYARD
- ▲ ENGINEERED SWDS
- ▲ LANDFILL MUNICIPAL
- ▲ LEAKING ABOVEGROUND STORAGE TANK
- ▲ LEAKING UNDERGROUND STORAGE TANK
- ▲ RCRA SMALL QUANTITY GENERATOR
- ▲ RESOURCE EXTRACTION ACTIVITY
- ▲ SAND/SALT STORAGE
- ▲ SLUDGE UTILIZATION SITE
- ▲ SURFACE SPILL
- ▲ SWAT (SURFACE WATER AMBIENT TOXICS) - RIVERS & STREAMS
- ▲ UNCONTROLLED SITE, ALL OTHER
- ▲ UNDERGROUND INJECTION SITE



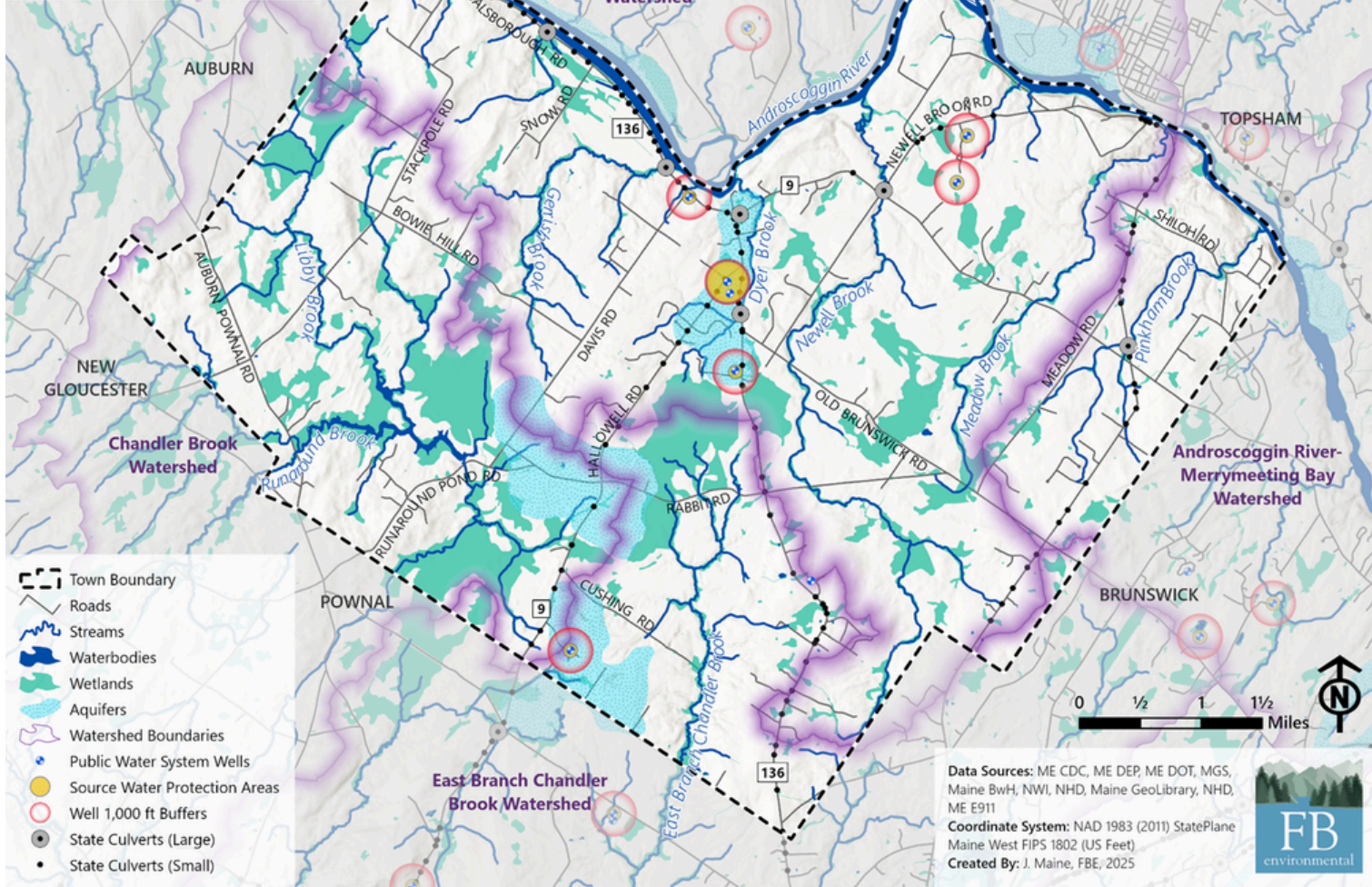
Data Sources: ME DEP, ME DOT, MGS, Maine BvH, NWI, NHD, Maine Geolibary, NHD, ME E911  
Coordinate System: NAD 1983 (2011) StatePlane  
Maine West FIPS 1802 (US Feet)  
Created By: J. Maine, FBE, 2025



# WATER RESOURCES

DRINKING WATER & STORMWATER  
DURHAM, ME

*This map is for planning and informational purposes only.*



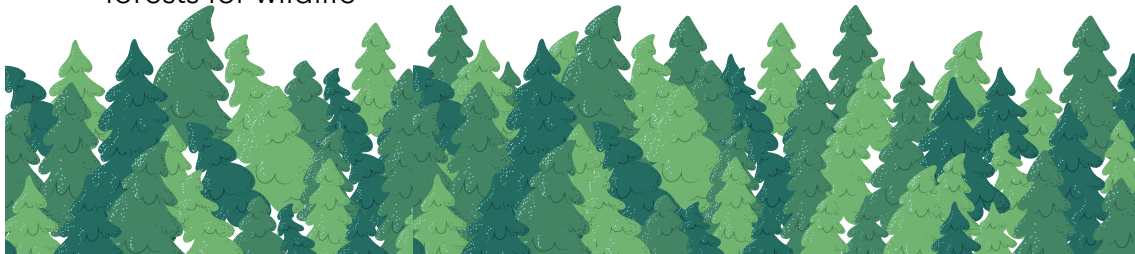
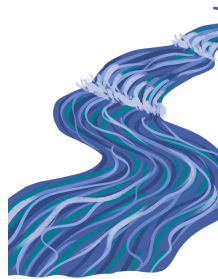
Learn more on our website!



## WILDLIFE HABITAT: QUICK FACTS

### KEY HABITAT FEATURES

- Lots of streams and riparian habitats
- Thousands of acres of wetlands
- 22 undeveloped habitat blocks more than 100 acres in size, providing unfragmented forests for wildlife



### CRITICAL HABITATS

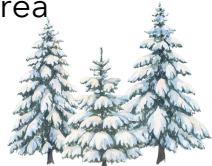
**490 acres** of inland waterfowl and wading bird habitat



**4 significant** vernal pools



**50 acres** of deer wintering area



### RARE FLORA AND FAUNA



Bald eagle  
**SPECIES OF SPECIAL CONCERN**

Dry land sedge  
**SPECIES OF SPECIAL CONCERN**



Little brown bat  
**ENDANGERED**

Needletip blue-eyed grass  
**SPECIES OF SPECIAL CONCERN**



Tricolored bat  
**THREATENED**



Narrow-leaved arrowhead  
**SPECIES OF SPECIAL CONCERN**



Creeper mussel  
**SPECIES OF SPECIAL CONCERN**

### THREATS: INVASIVE SPECIES

Species not native to Maine that pose a threat to human or ecological health.

- Asiatic bittersweet
- Autumn olive
- Glossy false buckthorn
- Japanese barberry
- Japanese knotweed
- Morrow's honeysuckle
- Multiflora rose
- Norway maple
- Reed canary grass
- Purple loosestrife



# WILDLIFE & HABITAT

## DURHAM, ME

This map is for planning and informational purposes only.

The Maine Department of Inland Fisheries and Wildlife maintains a database of observations of **Endangered, Threatened, or Species of Special Concern**. There was a reported rare animal sighting in Durham in 2013, but no additional information is provided by MDIFW.



Learn more on our website!



## AGRICULTURE: QUICK FACTS

### FARMLAND SOILS

**3,300 acres** of prime farmland soils

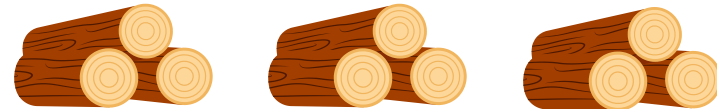
**5,700 acres** of farmland designated of statewide importance



### TIMBER HARVESTING

**3,157 acres** in the State's Tree Growth tax program

Average of **307 acres** harvested annually



### ACTIVE FARMS

**CONSERVED** 1. Old Crow Ranch: beef, pork, chicken, lamb, hay, dry goods, and dairy products

**CONSERVED** 2. New Leaf Farm: vegetables and hay

3. Replenova Farm: vegetables and prepared foods

4. East Branch Farm: eggs, maple syrup poultry, honey, and flowers

5. Beautiful Mess Farm: flowers and livestock

6. Whispering Woods Farm: herbal and wellness products

7. Wisteria Farm: hay

**CONSERVED** 8. Celebration Tree Farm: Christmas trees and vegetables

**CONSERVED** 9. Hunnewell Farms: vegetables

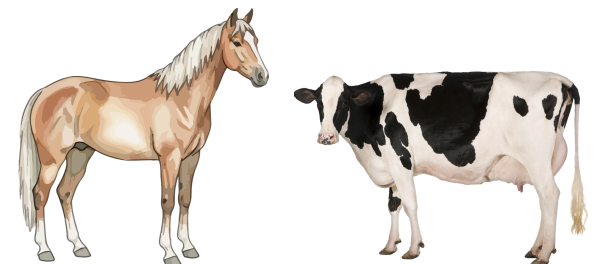
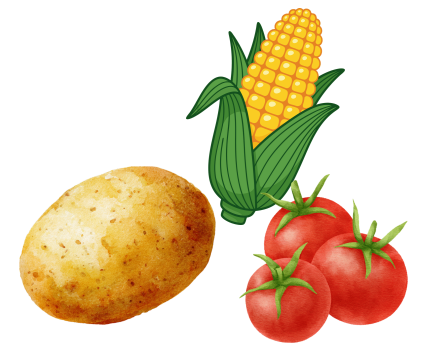
10. Springpoint Farm: horses

11. Rice Tree Farm: Christmas trees

12. Thanksgiving Farm: vegetables, hay, horses, and fruit trees

13. Bell Farms: vegetables

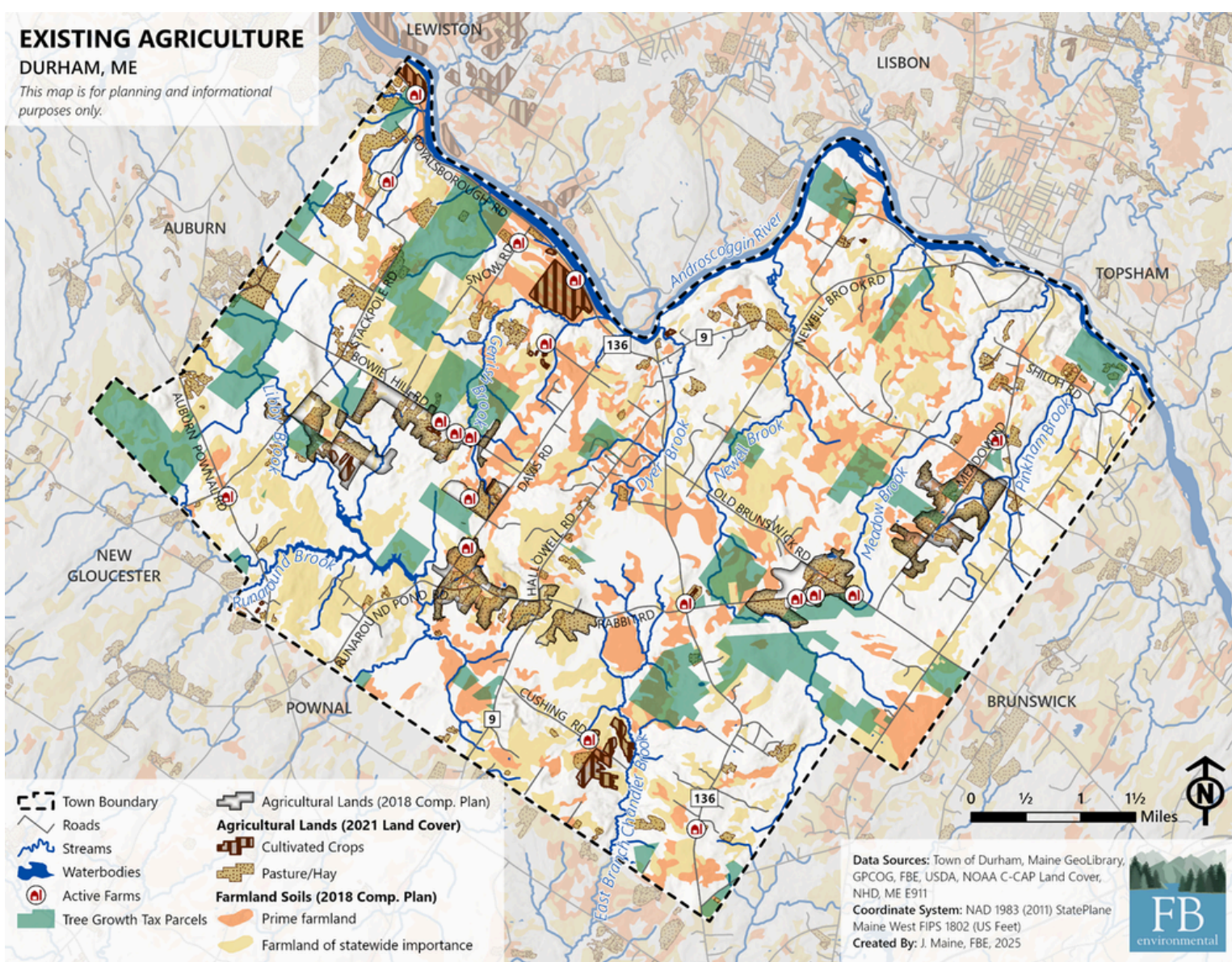
14. Anna-Lyn Farm: hay



# EXISTING AGRICULTURE

## DURHAM, ME

This map is for planning and informational purposes only.



Learn more on our website!



## CLIMATE IMPACTS: QUICK FACTS

### FLOODING AND EXTREME PRECIPITATION

- Maine is experiencing more intense rainstorms and winter rain events.
- 100-year flood has a **26% change of occurring during a 30-year period.**

Major flood risk along Royalsborough Rd and the Androscoggin River  
Flood depths could reach **19 to 37 feet.**



### HEAT AND TEMPERATURE CHANGE



Maine has warmed **3.5° F since 1895.**



Projected warming **2 to 4°F by 2050.**

Winters warming fastest, **altering snowpack and river flow.**  
Southern Maine may see **13.5 to 15 days ≥95°F annually by the 2050s.**

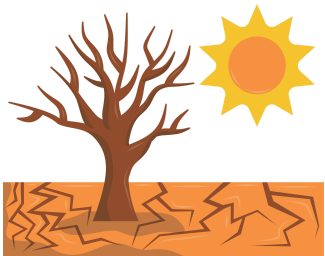


### DROUGHT AND WILDFIRE RISK

**Recent drought years:** 2001, 2002, 2016, 2017, 2020-2022, 2025

**Vulnerable agricultural areas:** Bowie Hill Rd, Davis Rd

**Wildfire risk areas:** Old Brunswick Rd, Pinkham Brook Rd



**Key impacts:** water shortages, crop stress, higher wildfire danger.

### ECOSYSTEM AND COMMUNITY HEALTH IMPACTS



- Rising tick-borne illness risk.
- Growing season increased ~2 weeks since 1950.
- Native species loss and invasive species spread expected.



**Key impacts:** human health concerns, changing agriculture, degraded habitats

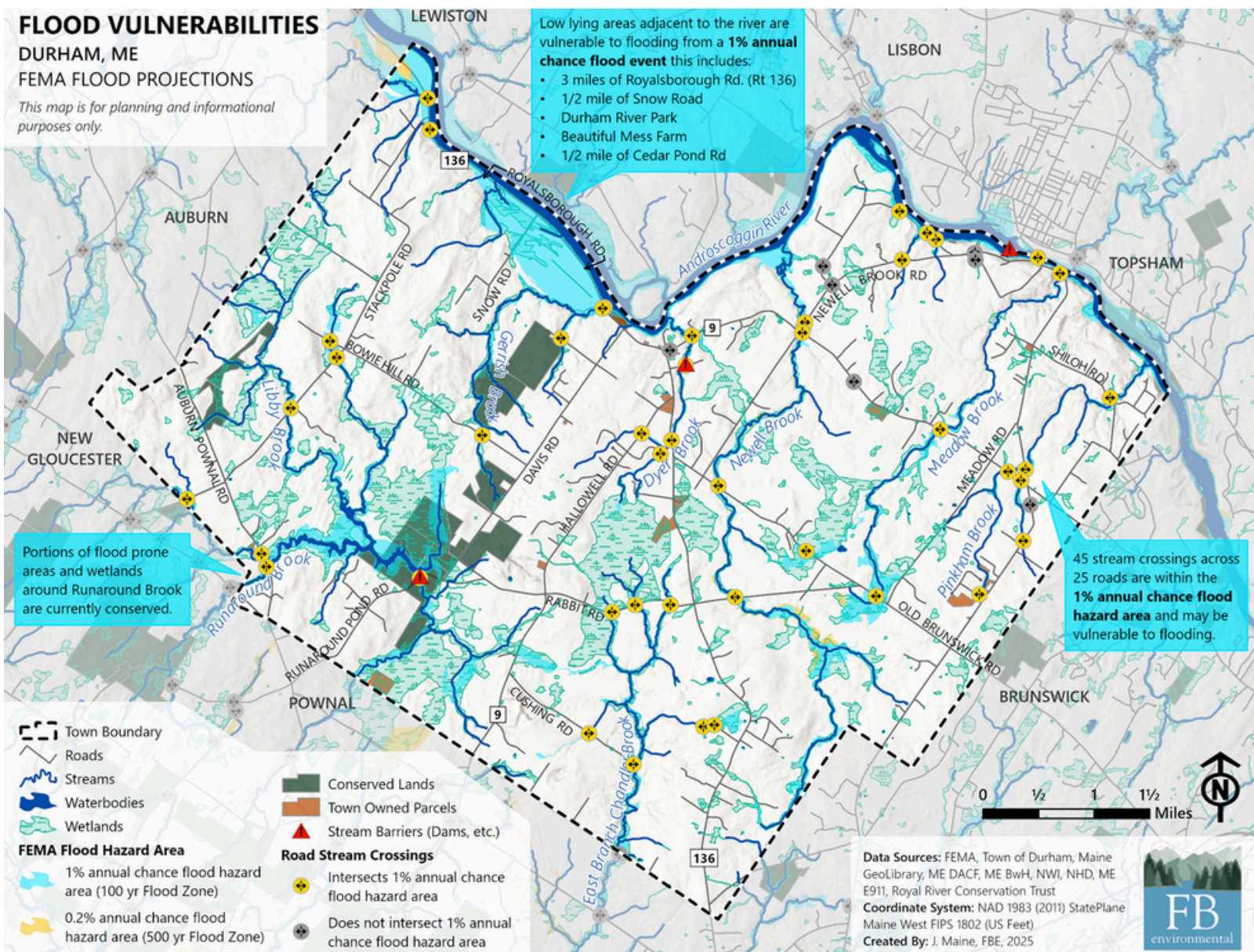
# FLOOD VULNERABILITIES

DURHAM, ME  
FEMA FLOOD PROJECTIONS

*This map is for planning and informational purposes only.*

Low lying areas adjacent to the river are vulnerable to flooding from a **1% annual chance flood event** this includes:

- 3 miles of Royalsborough Rd. (Rt 136)
- 1/2 mile of Snow Road
- Durham River Park
- Beautiful Mess Farm
- 1/2 mile of Cedar Pond Rd



Learn more on our website!

